

Cessna 140 N76600 S/N 11040

Removed Delco-Remy 15A generator P/N 1101876, S/N 9948 (datum -9.50"), Delco-Remy voltage regulator P/N 1118383, and 15A fuse holder.

Installed Delco-Remy 35A generator P/N 1101898, S/N A158804 (datum -9.50"), Delco-Remy voltage regulator P/N 1118704, and Potter Brumfield 35A circuit breaker P/N W23X1A1G35. All generator control wiring replaced with MIL-W- 22759/16 Tefzel wire, wire size selection based on International Cessna 120/140 Association Technical Reference Manual, Cessna 100 Series Service Manual, and AC43.13-1B. Note: the original wiring was found sufficient to support this alteration. The original 15A generator fuse was replaced with the above 35A circuit breaker.

All work was accomplished utilizing data derived from the International Cessna 120/140 Technical Reference Manual, Continental Type Certificate Data Sheet E-233 Revision 17, Cessna 140 Type Certificate Data Sheet A-768, Teledyne Continental Motors letter signed by Fred Fihe dated May 4, 1977, Teledyne Continental Motors Service Bulletin SB#95-3A, Continental Motors Corporation C85 Overhaul Manual Form X-30010, Cessna 100 Series Service Manual, Cessna Accessory Kit AK 150-23A Instructions and AC43.13-1B.

Updated Aircraft and Engine Logbooks, Equipment List and Weight and Balance Report.

Pilot Operating Handbook is not impacted by this alteration.

This alteration is compatible with all previously approved alterations.

Data for Continued Airworthiness per FAA Bulletin HBAW98-18:

Section 1. Introduction: Installed Delco-Remy 35A generator P/N 1101898. This installation will enhance aircraft usability.

Section 2. Description: Installed Delco-Remy 35A generator P/N 1101898, S/N A158804, voltage regulator P/N 1118704 and 35A circuit breaker Potter Brumfield P/N W23X1A1G35. All generator control wiring replaced with MIL-W-22759/16 Tefzel wire.

Section 3. Control, operation information: N/A

Section 4. Servicing information: Inspect generator drive coupling bushings IAW Teledyne Continental Motors Service Bulletin SB#95-3A and Continental Motors Corporation C85 Overhaul Manual Form X-30010.

Section 5. Maintenance information: Remove and inspect generator drive coupling bushings IAW Teledyne Continental Motors Service Bulletin SB#95-3A and Continental Motors Corporation C85 Overhaul Manual Form X-30010.

Section 6. Troubleshooting information: Remove and inspect generator drive coupling bushings IAW Teledyne Continental Motors Service Bulletin SB#95-3A and Continental Motors Corporation C85 Overhaul Manual Form X-30010.

Section 7. Removal and replacement information: Remove and reinstall generator and drive coupling IAW Continental Motors Corporation C85 Overhaul Manual Form X-30010.

Section 8. Diagrams: See below.

Section 9. Special inspection requirements: Remove and inspect generator drive coupling bushings IAW Teledyne Continental Motors Service Bulletin SB#95-3A.

Section 10. Application of protective treatments: N/A.

Section 11. Data: International Cessna 120/140 Association Technical Reference Manual pages 2400/05 and 2400/06, Continental Type Certificate Data Sheet E-233 Revision 17, Cessna 140 Type Certificate Data Sheet A-768, Teledyne Continental Motors Corporation letter signed by Fred Fihe dated May 4, 1977, Teledyne Continental Motors Service Bulletin SB#95-3A, Continental Motors Corporation C85 Overhaul Manual Form X-30010 Sections 10-30 through 10-38 pages 43 and 44, Cessna 100 Series Service Manual Section 17 pages 17-5 through 17-10 and Drawing 0410011, Cessna Accessory Kit AK 150-33A Instructions, and AC43.13-1B Figure 11-2 page 11-23.

Section 12. List of special tools: N/A.

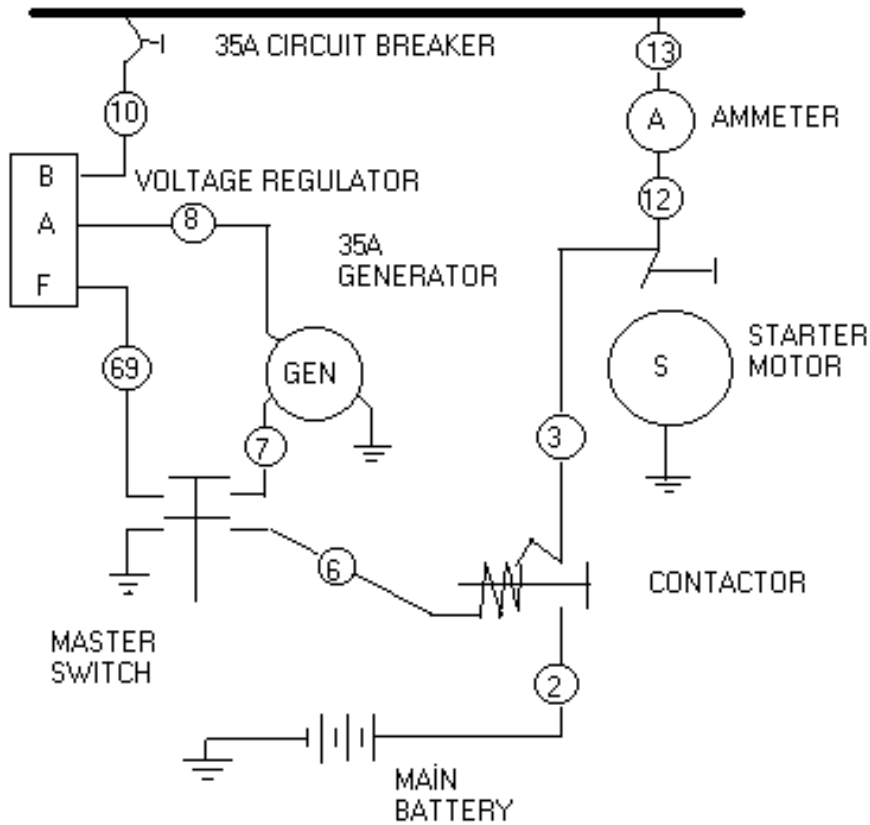
Section 13. For commuter aircraft: N/A.

Section 14. Recommended overhaul periods: None specified.

Section 15. Airworthiness limitations: N/A.

Section 16. Revision: N/A

Reference: Section 8. Diagrams: Updated wiring diagram.



Legend: Wire numbers from Cessna 120 and 140 Parts Catalog Form 924

<u>Wire #</u>	<u>Wire Gauge</u>	<u>Wire Location</u>
2	4 gauge	Main Battery to Contactor
3	4 gauge	Contactor to Starter Motor
6	18 gauge	Contactor Coil to Master Switch
7	18 gauge	Master Switch to Generator Field
8	10 gauge	Generator Armature to Voltage Regulator (Armature)
10	10 gauge	Voltage Regulator (Battery) to 35 Amp Circuit Breaker and Main Bus
12	10 gauge	Starter Motor to Ammeter
13	10 gauge	Ammeter to Main Bus
69	18 gauge	Master Switch to Voltage Regulator (Field)